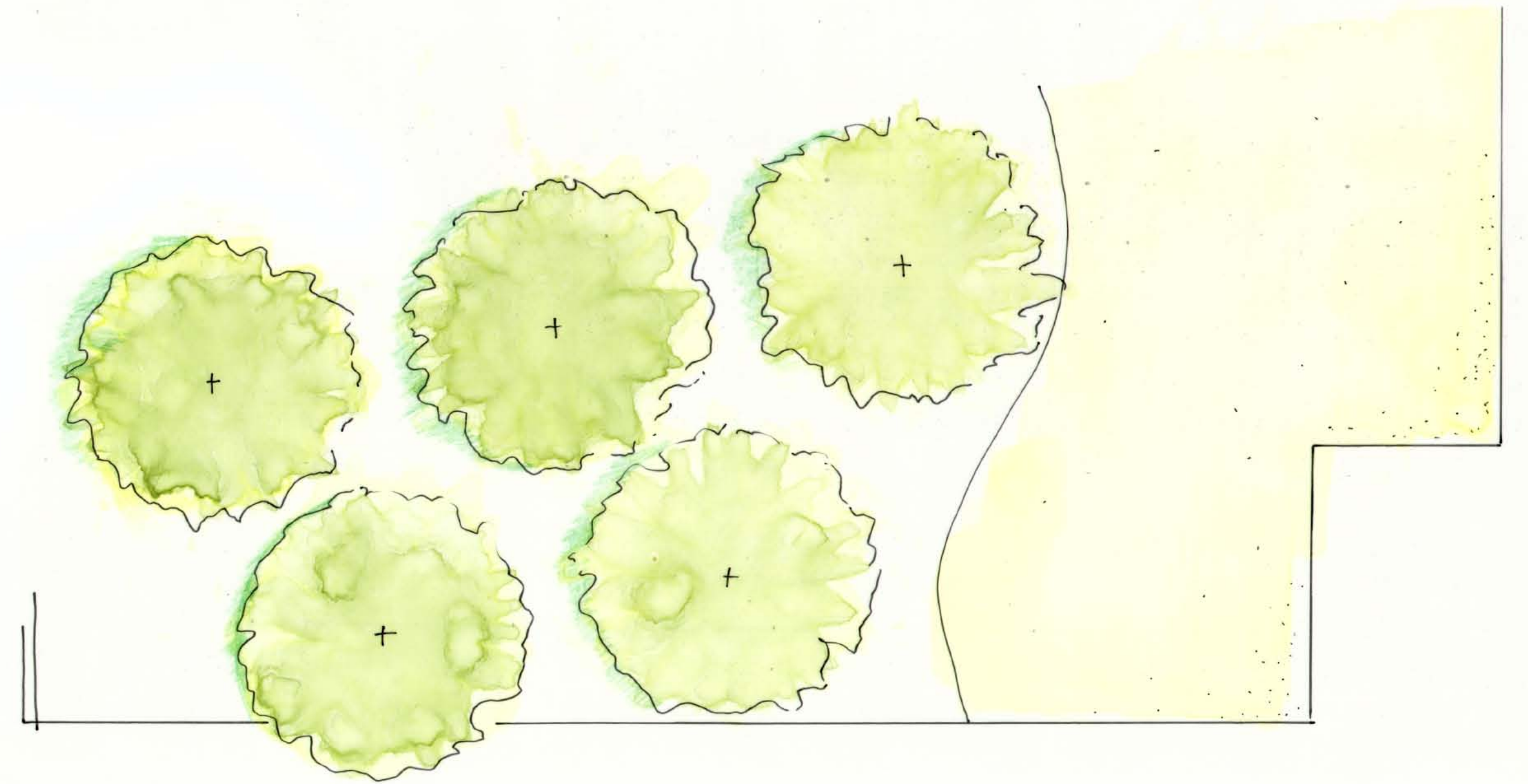


METZGER HALL RAIN GARDEN

RUTGERS, THE STATE UNIVERSITY OF NJ



DESIGN: KARI WILLIAMS
FALL 2017

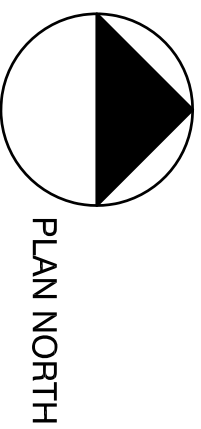
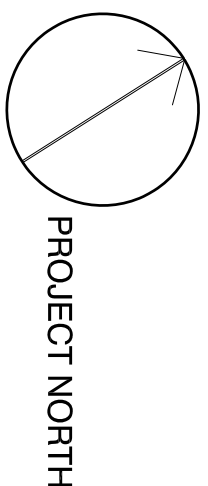


Signature Line

BIRD TREE
Landscape Architecture

Landscape Architecture

Rutgers Facilities



PROJECT TITLE

METZGER HALL RAIN GARDEN

METZGER HALL RAIN GARDEN

ADDRESS
43 Bevier Rd
Piscataway Township, NJ
08854

08854

08854

08854

DATE _____

December 6, 2017

DRAWN BY

Kari Williams

SCALE

$$1'' = 10'$$

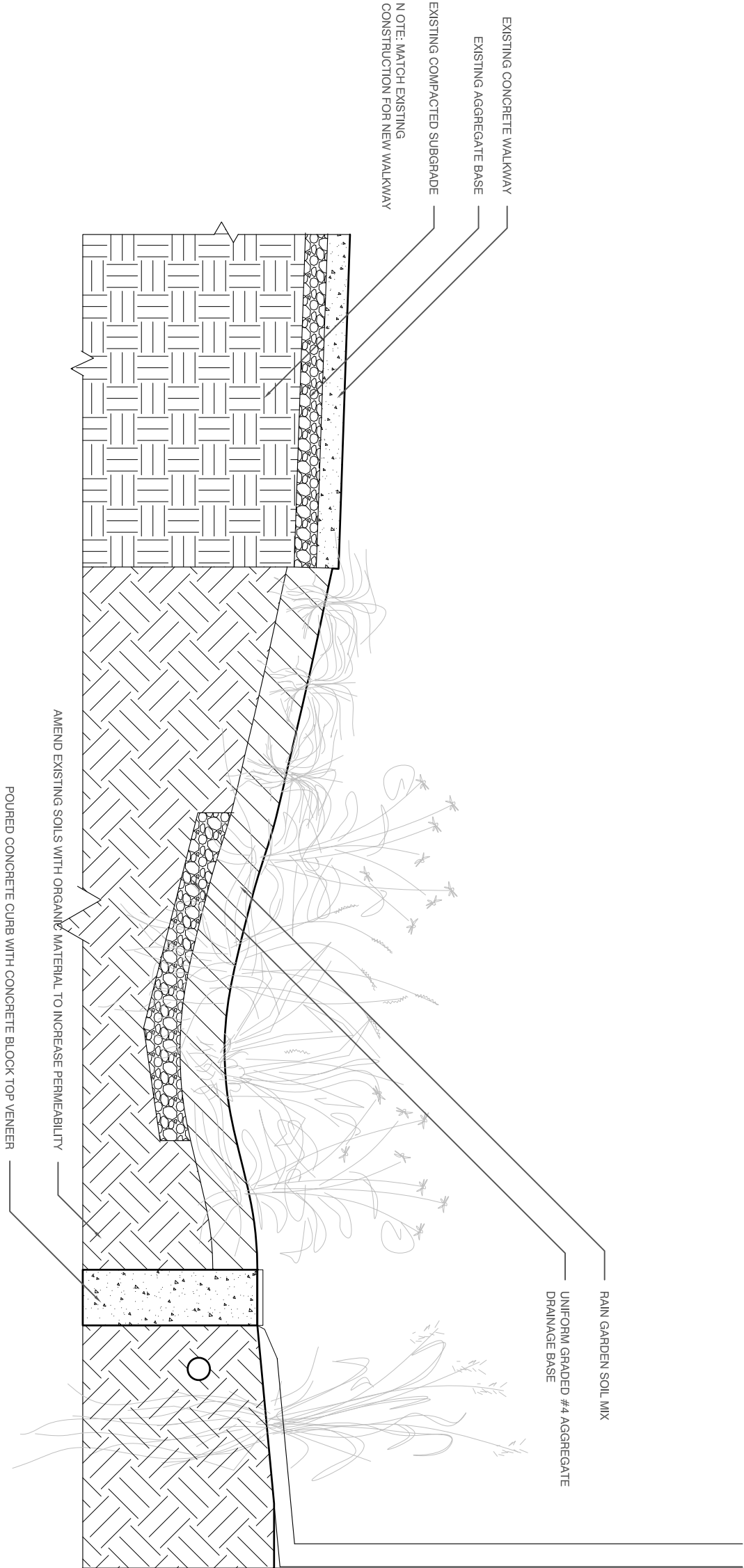
DRAWING NUMBER

LA-100

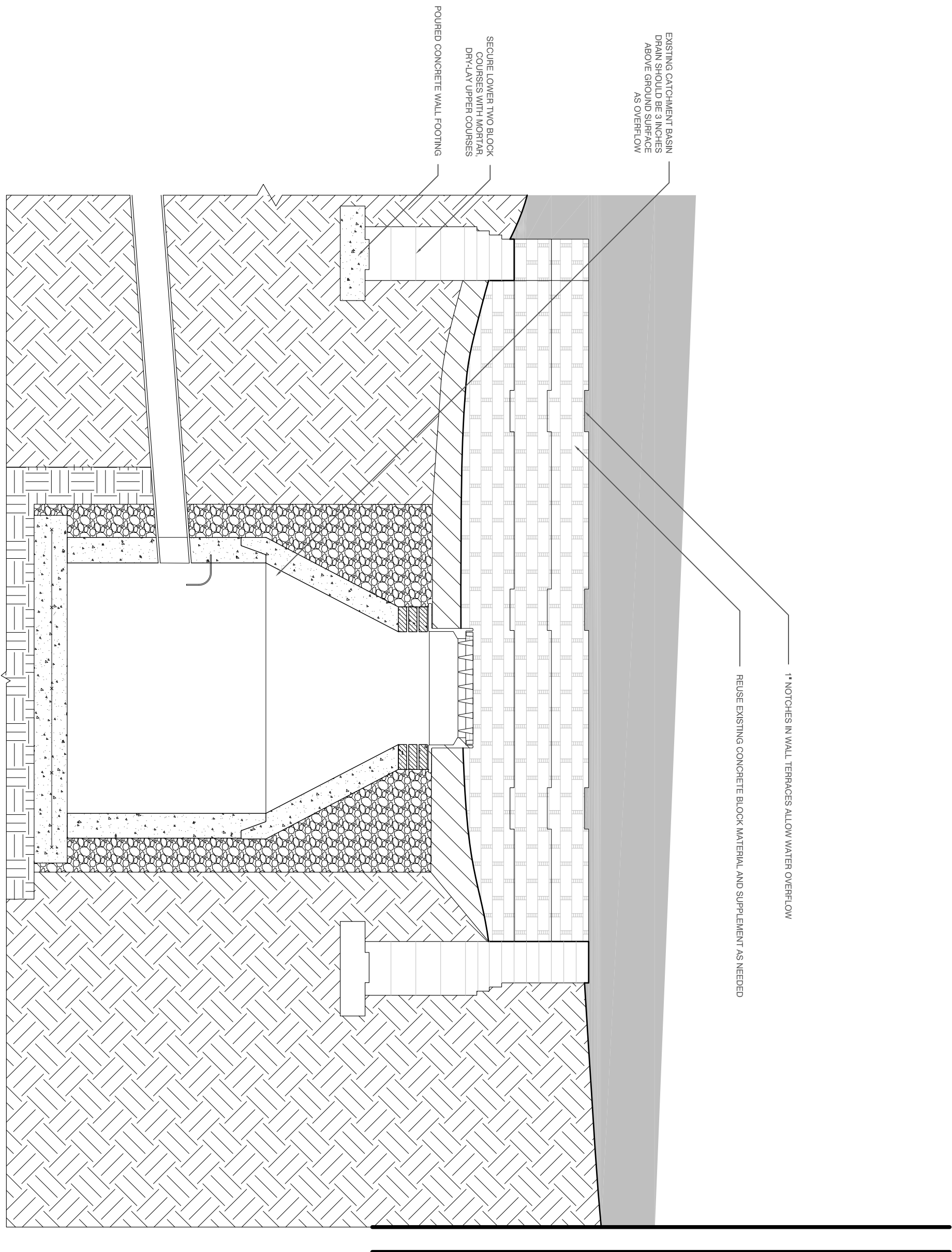
Signature Line

BIRD TREE
Landscape Architecture

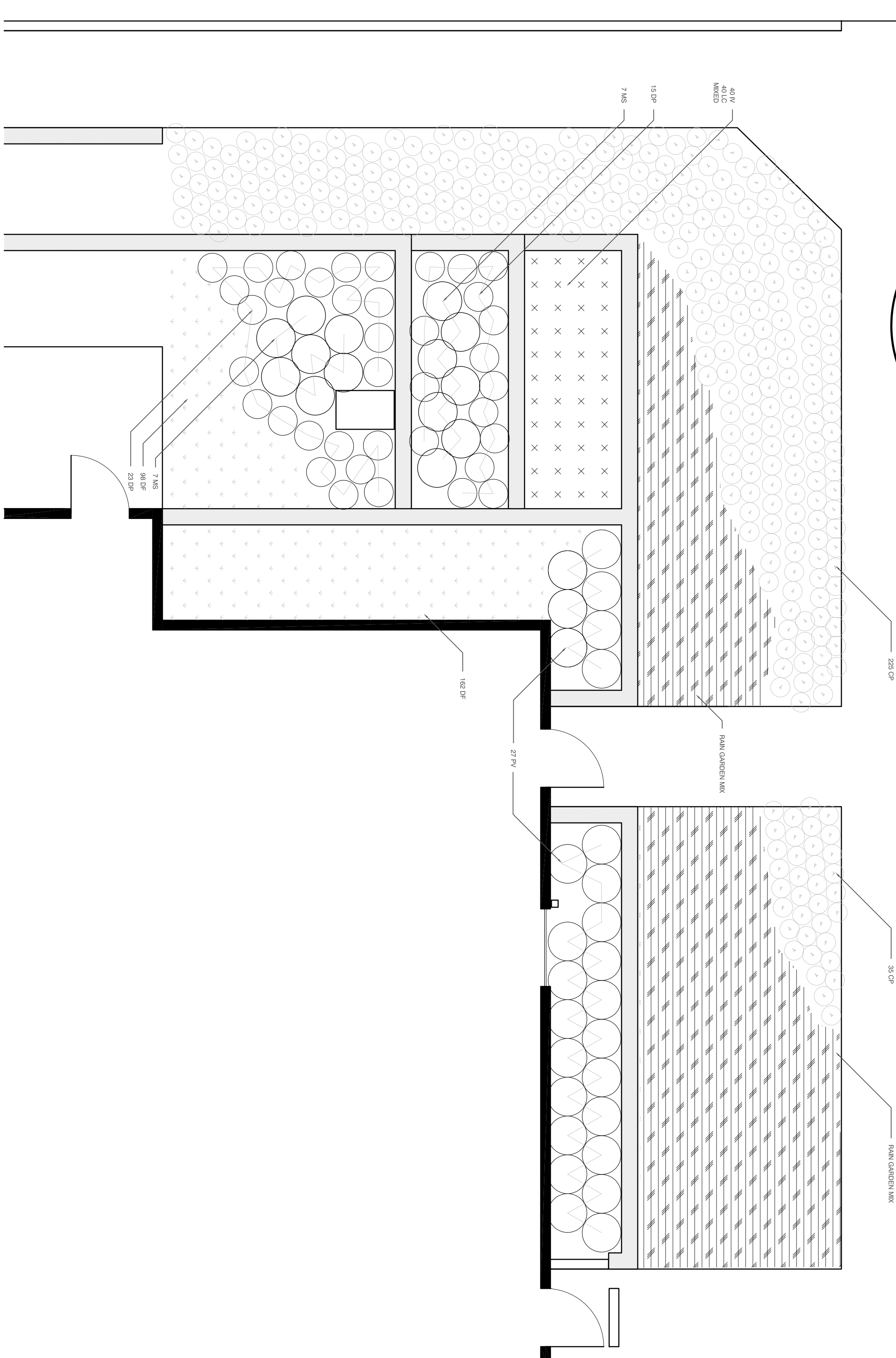
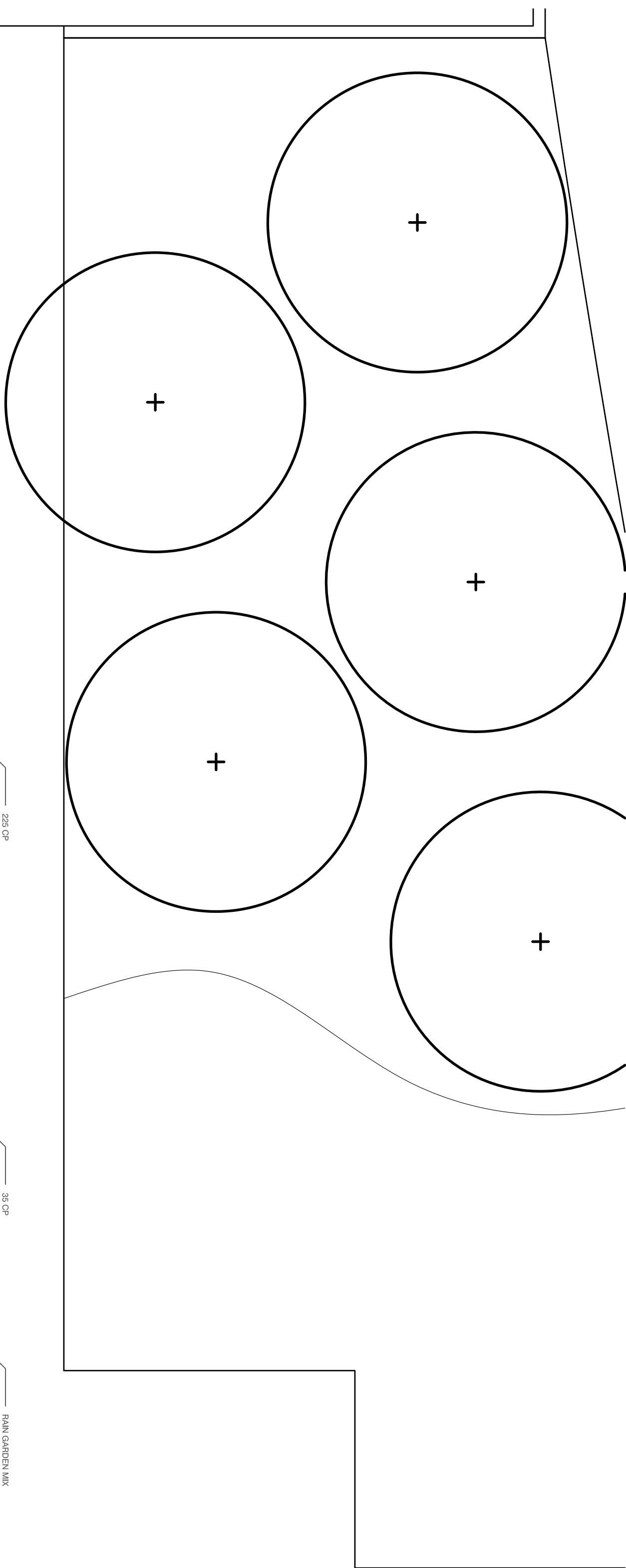
Rutgers Facilities



RAIN GARDEN DETAIL (WITH PLANTS)

$$\sum_{i=1}^n 1 = n$$


WALLS AND DRAINAGE SECTION-ELEVATION (SHOWN WITHOUT PLANTS,

$$\begin{array}{c} \Sigma \\ || \\ 1 \end{array}$$


PLANTING PLAN

$$\frac{d}{dt} = 1$$

PLANT SCHEDULE					
Code	Botanical Name	Common Name	Quantity	Size	Spacing
Seed Mixture					
Rain/ Garden Mix	Earnst Conservation Seeds	Rain Garden Mix - ERNMIX-180		3 oz seed	Spread liberally
Grasses					
DF	<i>Deschampsia flexuosa</i>	Wavy Hair Grass	260	Plugs	10"
PV	<i>Panicum virgatum</i>	Switchgrass	27	1/2 Gal.	24"
CF	<i>Carex pensylvanica</i>	Sedge	360	Plugs	10"
Flowering Perennials					
F	<i>Iris Versicolor</i>	Blue Flag Iris	40	Plugs	12"
LC	<i>Lobelia cardinalis</i>	Cardinal Flower	40	Plugs	12"
Ferns					
DP	<i>Dennstaedtia purtilloibula</i>	Hay-scented fern	38 Quant 16"		
IS	<i>Maturechia struthiopters</i>	Ostrich Fern	14	1/2 Gal.	24"

METZGER HALL RAIN GARDEN

ADDRESS
43 Bevier Rd
Piscataway Township, NJ
08854

December 6, 2017

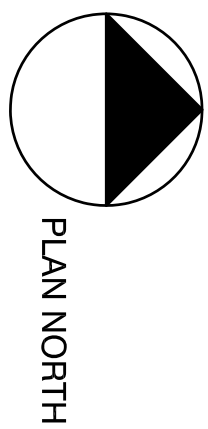
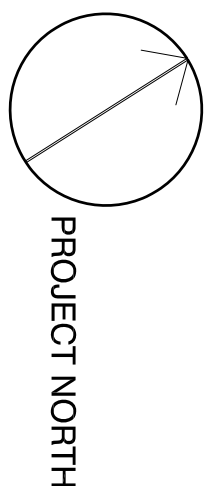
DRAWN BY
Kari Williams

SCALE

As noted

DRAWING NUMBER

LA-200



PROJECT TITLE